

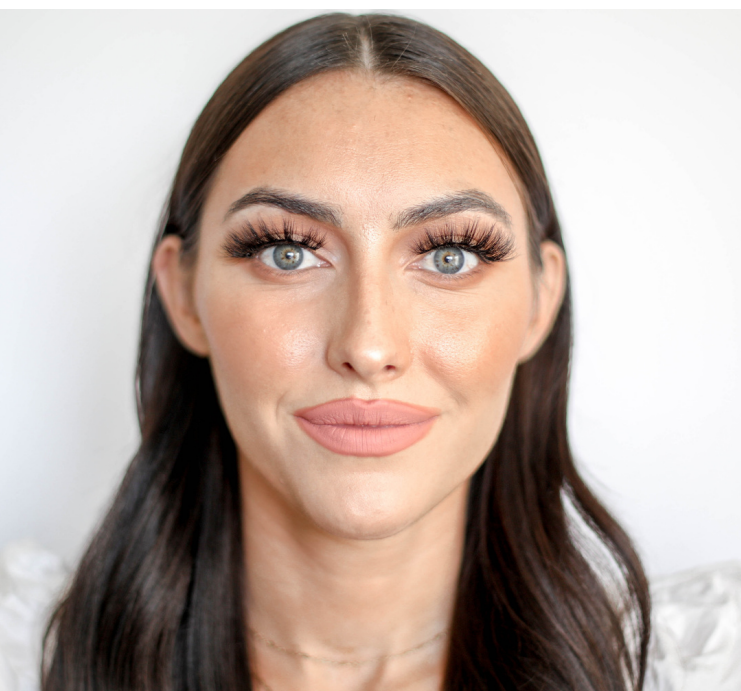
B.LASHED STYLES











B.LASHED ACCESSORIES

Black Lash Adhesive

- applies black and dries black
- doubles as lash glue and eyeliner!
- stays tacky all day long
- allergy free, latex free and paraben free



White Lash Adhesive

- applies white and dries clear
- stays tacky all day long
- allergy free, latex free and paraben free
- can be applied on the lash and or directly on the eyelid



Lash Applicator

- used to apply false lashes
- lifetime warranty
- gold hardware



B.LASHED ACCESSORIES

Accessory Bundle

Includes

- Lash curler
- Lash applicator
- Lash scissors
- Lash spoolie

